



# SCADA User Group Meeting

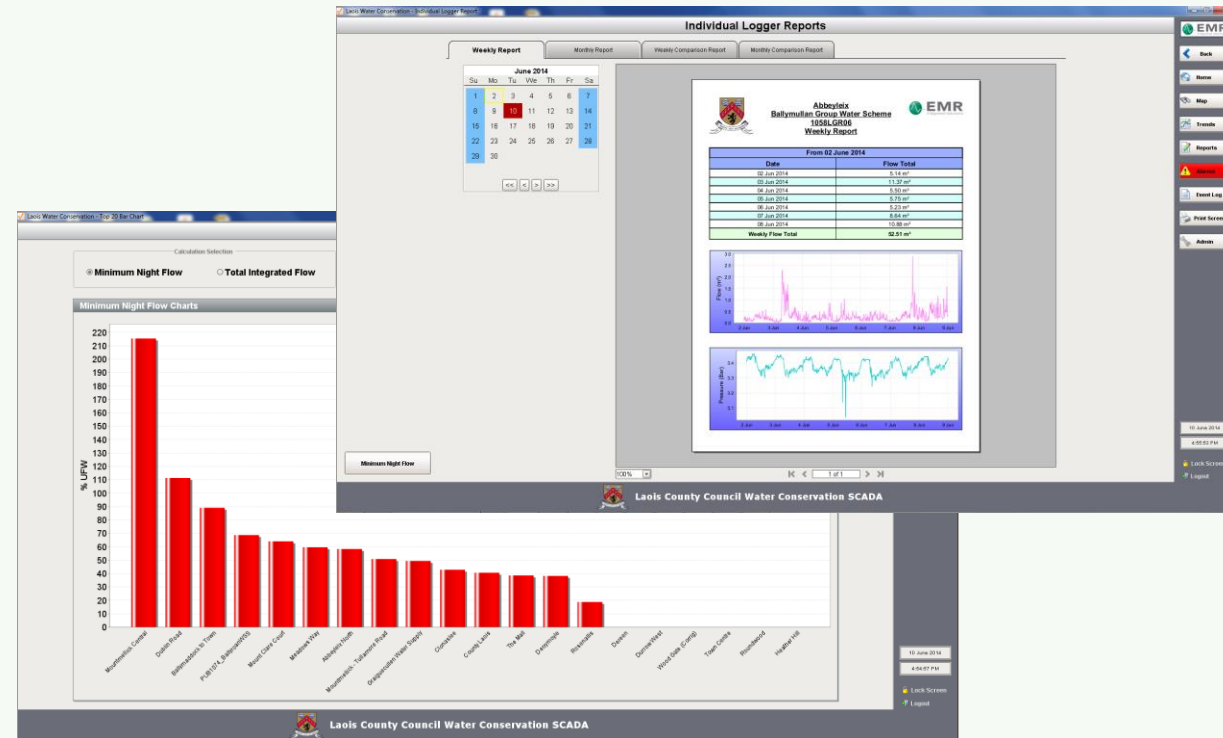
Peter Thornton, SCADA Engineer, EMR Integrated Solutions



# Water Conservation Module



- Add-on module for Ignition
- Integrates Logger & RTU flow data
- Allows dynamic configuration of DMAs
- Calculates Unaccounted For Water
  - Minimum Night Flow
  - Total Integrated Flow



# Setup



- Import of Logger Data from multiple vendors
- Integration of flow data from real-time SCADA RTUs
- Create DMAs and store static information
  - Pipeline Length
  - Domestic & Commercial Users
  - Number of Connections
- Assign Flow Meters as import & export meters

# Setup



Laois Water Conservation - DMA Administration

### DMA Administration

**DMA ID & Description**  
DMA ID: 1600PUB1066  
Description: Graiguecullen Water Supply

**Scheme ID**  
Scheme ID: Graiguecullen  
Graiguecullen

**General Details**  
Location: Graiguecullen  
Length of pipework: 0 km  
Number of domestic connections: 1366  
Number of domestic users: 3934  
Number of commercial connections: 0  
Average daily use for each commercial connection: 0.00 m3  
Number of exceptional night users: 1  
Average daily use for each exceptional night user: 40.00 m3  
Average zonal night pressure: 1.80 Bar

**Import Meters**  
Flow Meter  
Loggers/Radcom-GPRS-A1066LGR01-Ch02  
Remove Logger from DMA

**Export Meters**  
Flow Meter  
Remove Logger from DMA

**Command Buttons**  
+ New DMA  
Save  
Delete

**All Meters**

Flow Meter	Description
Loggers/Radcom-GPRS-A4006LGR02-Ch02	Killenard Reservoir Outlet
Loggers/Radcom-GPRS-A4006LGR03-Ch02	Barrow Bridge Export to Offaly
Loggers/Radcom-GPRS-AAXXLGR01-Ch02	Meelick North
Loggers/Radcom-GPRS-AAXXLGR02-Ch02	Meelick South
P 13 144/ClonasleeLCCWTP/InletFlow	
P 13 144/ClonasleeLCCWTP/OutletFlow	
P 13 144/RearWTP/InletFlow	
P 13 144/RearWTP/OutletFlow	
P 13 144/RosenallisRes/OutletFlow	
P 13 144/RosenallisWTP/OutletFlow	
P 13 144/WillowGroveWBPS/Flow	

  
Set as Import Meter  
Set as Export Meter

**EMR**  
Back  
Home  
Map  
Trends  
Reports  
Alarms  
Event Log  
Print Screen  
Admin  
10 June 2014  
5:04:47 PM  
Lock Screen  
Logout

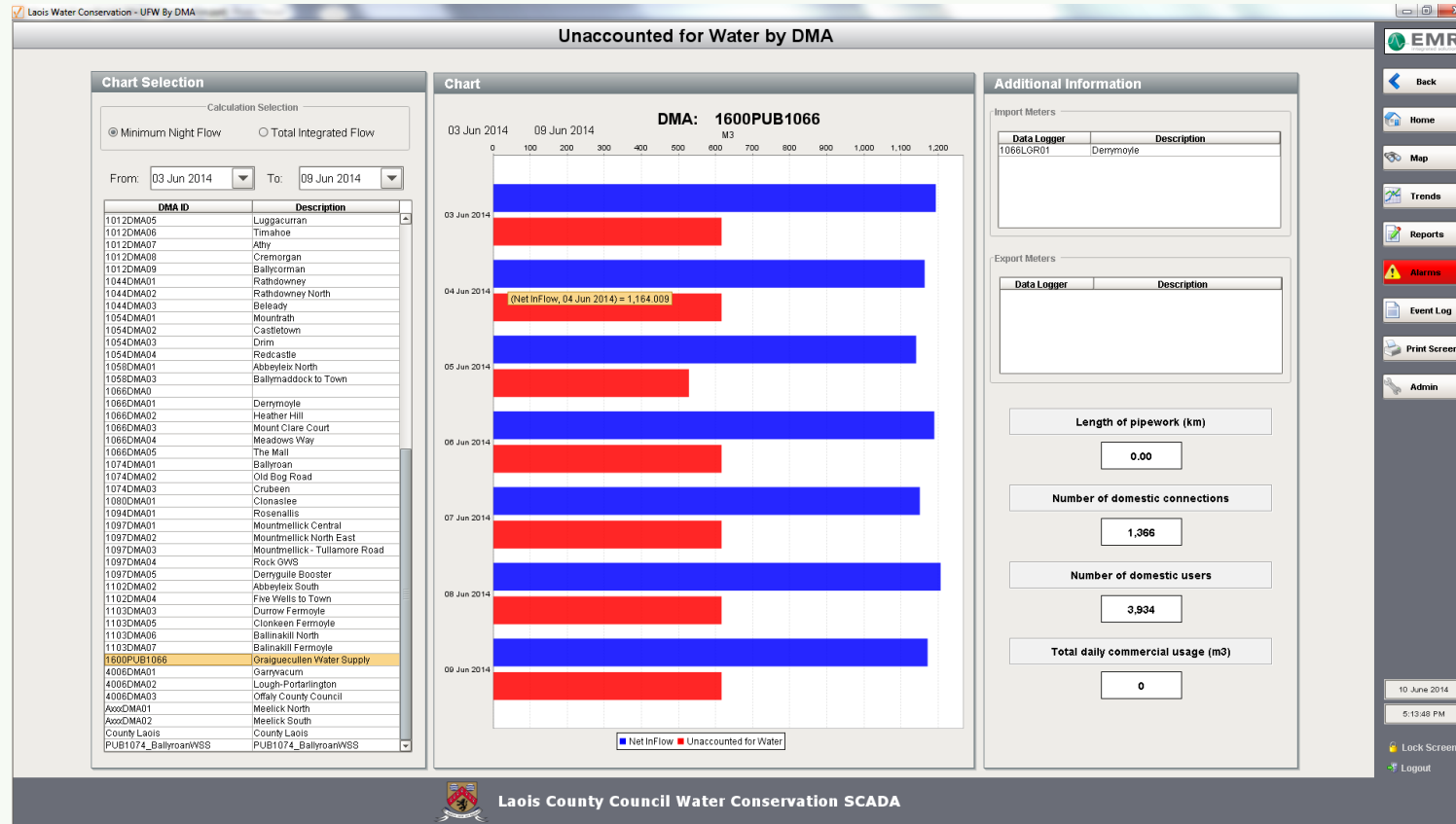
Laois County Council Water Conservation SCADA

# UFW Calculations



- Daily flow totals are calculated following receipt of logger data
- Flow information is combined with DMA information to calculate UFW
- DMAs can be compared with each other to determine highest UFW
  - Total UFW in M<sup>3</sup>
  - % UFW
  - UFW in M<sup>3</sup>/km of pipeline/hour
  - UFW in Litres/Connection/Day
- DMAs can also be compared against previous months to determine change

# UFW Reports



# Discussion



Discussion



[www.emrsolutions.ie](http://www.emrsolutions.ie)

integrate | automate | communicate

